


Triumph  
an **ATS** home  
[www.triumph.atsgreens.com](http://www.triumph.atsgreens.com)



Anand Divine Developers Pvt. Ltd.

Site Office: ATS Triumph, Sector 104, Gurgaon, Haryana 122001

Corporate Office: ATS Tower, Plot No. 16, Sector 135, Noida. Ph.: 0120-7111500

 [ATS Infrastructure Ltd.](#)  [ATS Greens](#) | [www.atsgreens.com](http://www.atsgreens.com) | [sales@atsgreens.com](mailto:sales@atsgreens.com)

Member  
**CREDAI**

Triumph  
an **ATS** home

“The future belongs to those who see possibilities before they become obvious.”



# Visionaries Welcome

*The Dwarka Expressway, located at a stone's throw away, is poised to become one of India's widest roads. It will eliminate the congestion between Delhi and Gurgaon, while driving from the Dwarka Expressway to Terminal 3 of Indira Gandhi International Airport will only be a few minutes away.*

Delhi

IGI Airport



Sector  
104

Gurgaon

In close proximity to Dwarka, IGI Airport  
& the proposed Diplomatic Enclave.

# DWARKA EXPRESSWAY

12 Acres

8 Towers

443 Homes

2 Apartments per floor

A Premium Signature Collection from ATS

Classic Luxury  
meets  
Modernist Vision



Distinctly Designed

Only 2 Apartments per Floor with a view of verdant greens.

Expansive layouts with generous living and guest spaces.

The Rare Luxury of Quietude.

Reimagine Privacy





# U ltra-chic

Inspired by the great architect Mos van der Rohe's philosophy "God is in the details", Triumph homes have been crafted with meticulous attention to minute details. Finished with exquisite wooden flooring and imported marble.

Triumph features the rare luxury of integrated air-conditioning and customised modular wardrobe in every home. Experience the sublime in the ultra-luxe features of Triumph, which truly embodies a connoisseur's dream of a home.

- Imported Marble
- Wooden Flooring
- Granite Counters
- Premium Fixtures
- Modular Wardrobes
- Integrated Air Conditioning



# R eady to Occupy

Enjoy the freedom from the hassles of having to hire contractors to install flooring or air conditioning or light fixtures before moving in. Each Triumph home has been exceptionally finished, so all you have to do is simply move in with your family.



Welcome Home



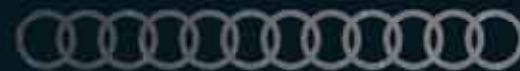
# Amenities Extraordinaire

- 7 Acres of open & landscape greenery
- 2 Exquisite Clubhouses
- 2 Swimming Pools

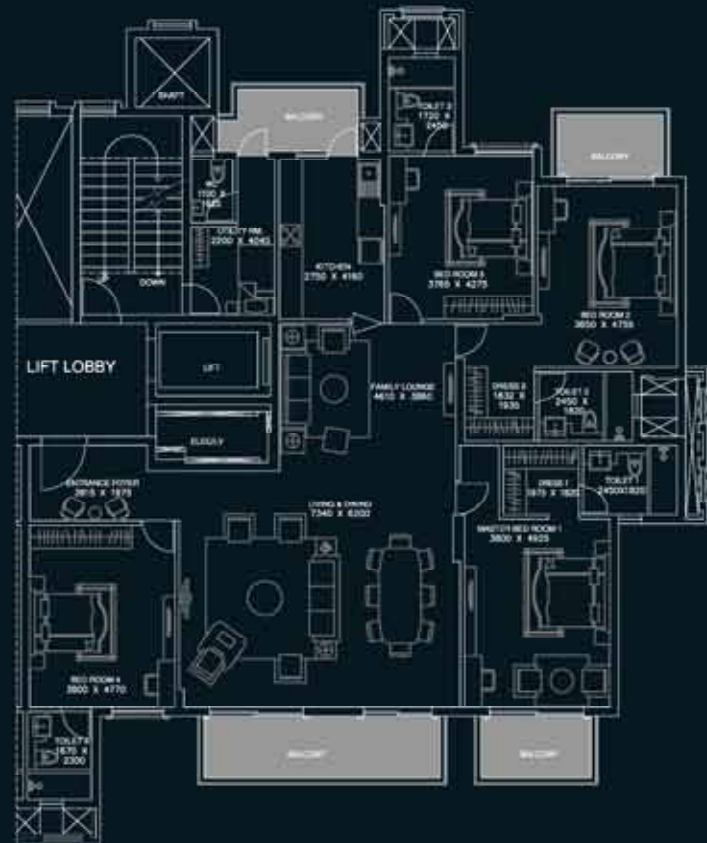


# Euphoria of Wireless Living

Realizing the ultimate dream of the modern-day digerati - each Triumph home is appointed with the latest wireless technologies, enabling the perfect integration of all electronic equipment at home. Control everything at the single touch of a digital screen from any room. Triumph's elegant design of ultra-chic living extends into the smallest detail of a home. A modernist interpretation of timeless luxury... Just plug in and play!



## Type A (4 BHK+1)

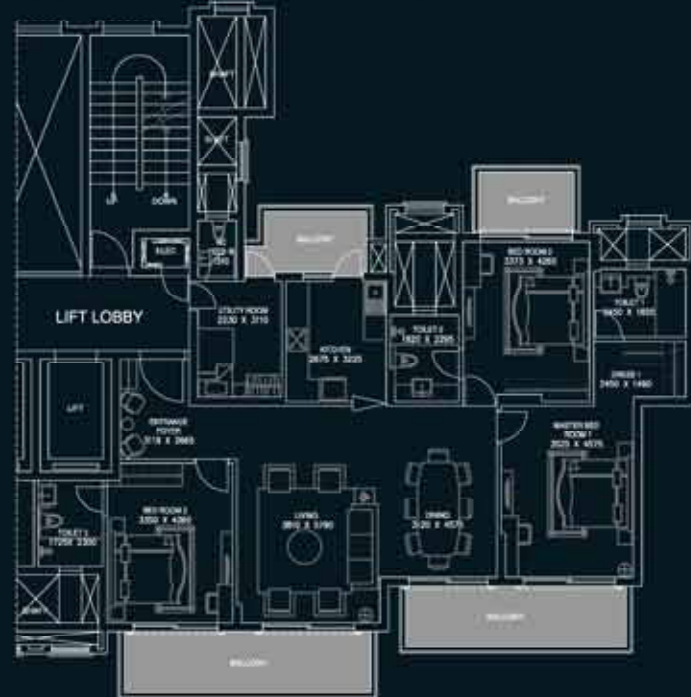


Total Area: 3160 Sq. Ft.  
 Built up (Unit + Balcony) Area: 2595 Sq. Ft.  
 Common Circulation + Services: 555 Sq. Ft.  
 Carpet Area: 2094 Sq. Ft.

**NOTE:**

1. The window size/its location in rooms may change because of elevational features.
2. The overall layout may vary because of statutory reasons in case required.
3. Currently no columns are shown in the plan which will be incorporated as/structure.
4. Layout shown is for illustration purposes, for specific unit floor plan please contact sales team.

## Type B (3 BHK+1)



Total Area: 2290 Sq. Ft.  
 Built up (Unit + Balcony) Area: 1862 Sq. Ft.  
 Common Circulation + Services: 428 Sq. Ft.  
 Carpet Area: 1344 Sq. Ft.

**NOTE:**

1. The window size/its location in rooms may change because of elevational features.
2. The overall layout may vary because of statutory reasons in case required.
3. Currently no columns are shown in the plan which will be incorporated as/structure.
4. Layout shown is for illustration purposes, for specific unit floor plan please contact sales team.

## Site Plan



NOTE: The site plan shown is tentative. The overall layout may vary because of statutory/ design reasons. For updated layout plan, please contact sales team.