



The Heartsong

Sector 108, Gurugram



Ready To Move-in
Air-conditioned Apartments
The Perfect Place For Family Living



About **The Heartsong**

Located amidst lush greenery and sweet chimes of the wind, your heart will truly wish to settle at The Heartsong.



A Day At **The Heartsong**

It is a place where life flows with comfort effortlessly. A place where you can take a relaxing dip in the pool after getting your car washed at our specialised bay, or get fresh groceries for that new dish you've been wanting to cook.

Whatever the life needs, you will find it at The Heartsong.



The **Heartsong** is...

A Themed Landscape

- Sculptures
- Manicured Gardens
- Topiaries
- Exotic Foliage

Leisure & Rejuvenation

- Outdoor Gym
- Cricket Practice Net
- Skating Rink
- Badminton Court
- Half Basketball Court
- Jacuzzi & Spa
- And More....



Community Living

- Provision for 2 Nursery schools
- Multi-purpose Hall
- Open-air Amphitheatre
- Kids Area and Play Zones

A Planned Neighbourhood

- Provision for Convenience store for daily needs
- Shuttle Service to assigned drop-off points
- Medical Clinic
- CCTV Surveillance
- Security Guards
- Ambulance on site (Common for Experion Projects)
- Close proximity to IGI Airport, Delhi

The **Heartsong** Offers...

Club Chorus

- Recreational Activities
- Community Spaces

The Symphony

- Penthouse
- 4 BHK + Utility
- 3 BHK + Utility + Study

The Rhythm

- 3 BHK + Utility

The Harmony

- 2 BHK + Utility

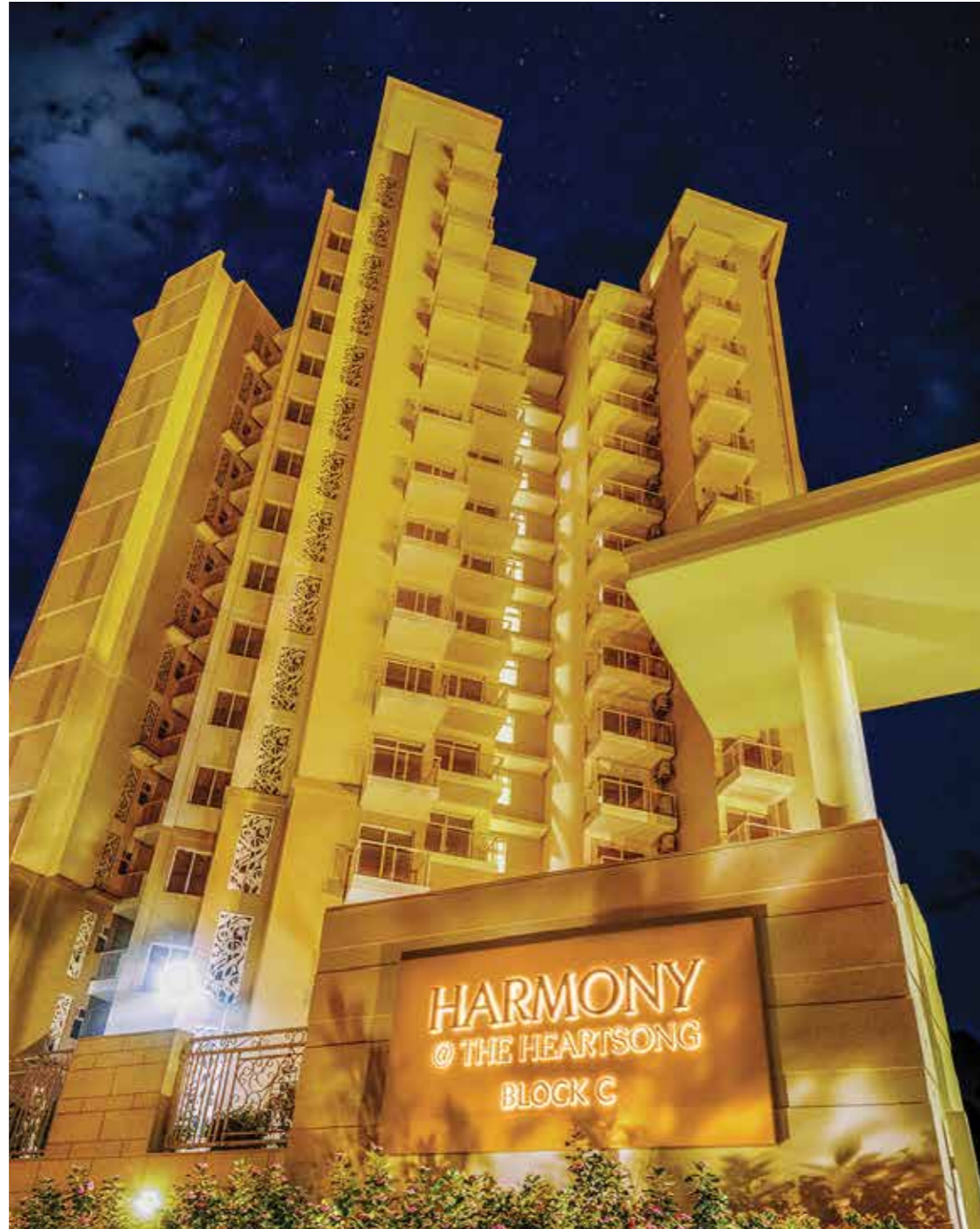
The Melody

- 2 BHK + Utility



About **The Harmony**

A modern address for the urban family.
Find the perfect balance between comfort and luxury at The Harmony.



2 BHK Apartments (1283 sq. ft.) | Tower Height: Stilt + 14 floors



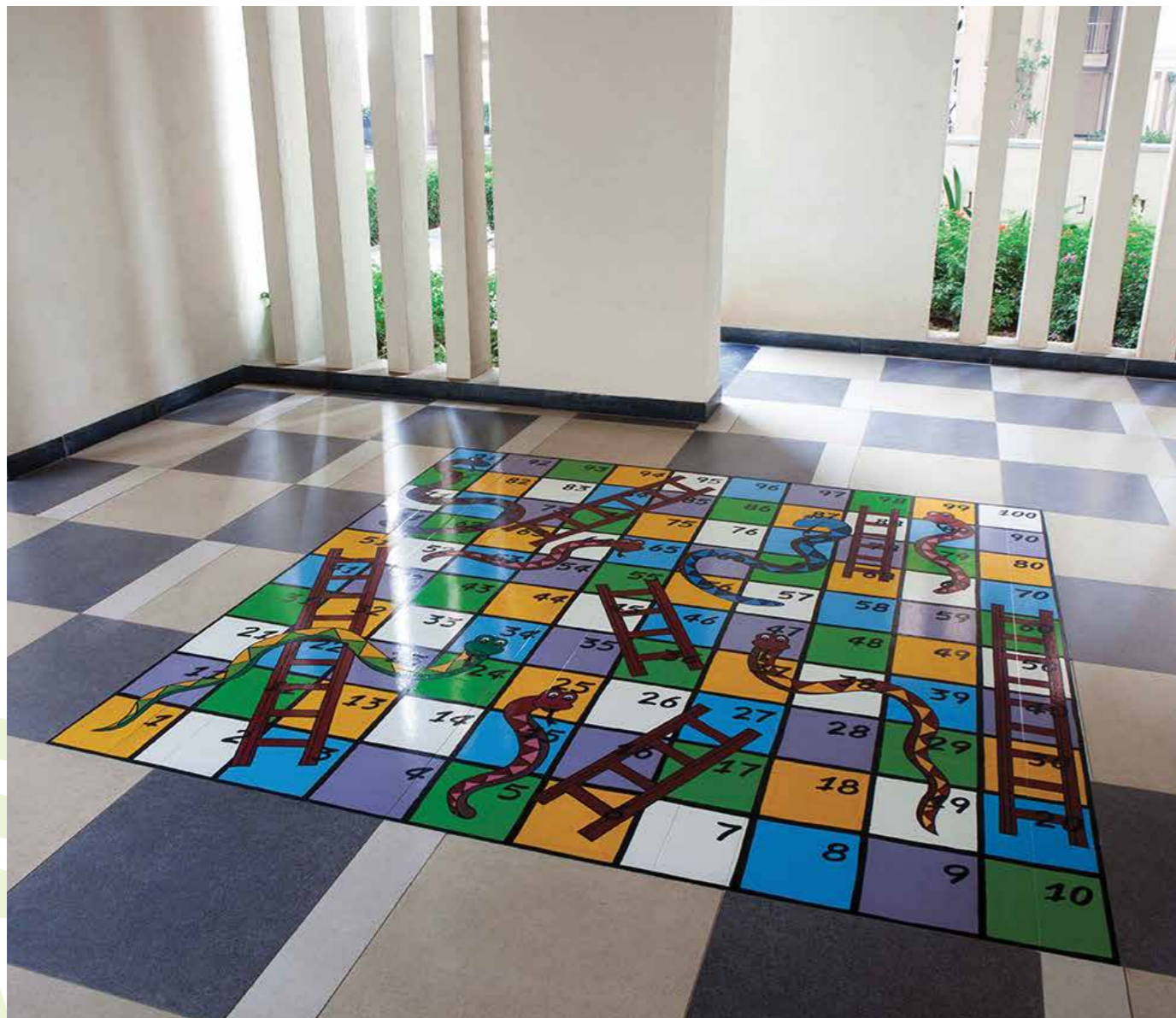
About **The Melody**

Make space for everyone with wide and airy rooms at The Melody.
Come home to a place that makes you smile with glee.

2 BHK Apartments (1283 sq. ft.) | Tower Height: Stilt + 9 floors

About **The Symphony**

Comfort and class now come wrapped with a bow on top. With our thoughtfully designed apartments at The Symphony, we take the meaning of luxury of space a notch above.



3 BHK Apartments (2338 sq. ft.) | 4 BHK Apartments (2631 sq. ft., 2779 sq. ft.)
4 BHK Penthouse (4184 sq. ft.) | 5 BHK Penthouse (4747 sq. ft., 4801 sq. ft.)
Tower Height: Stilt + 14 floors



About **The Rhythm**

At The Rhythm, there's a place for you to nurture relationships that matter the most. Build, evolve and grow with your family right where you feel at home.

3 BHK Apartments (1758 sq. ft., 2003 sq. ft.) | Tower Height: Stilt + 11-14 floors

Club Chorus

Spend quality time with family and friends at our multi-level activity hub. Irrespective of what you're in the mood for, there is a chorus for your song.



Club Chorus



Gymnasium



Snooker Table



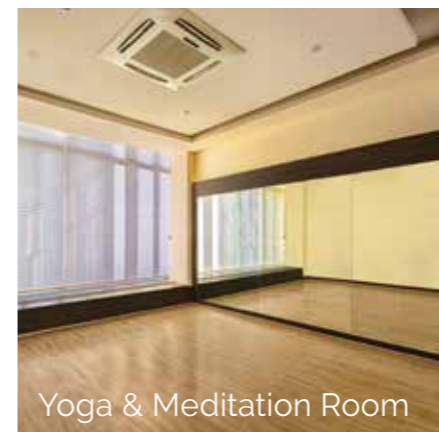
Swimming Pool



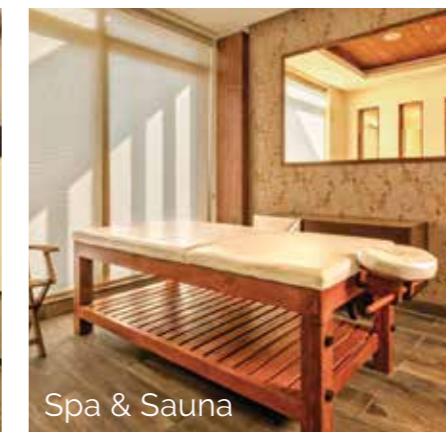
Tea Lounge



Kids Play Area



Yoga & Meditation Room

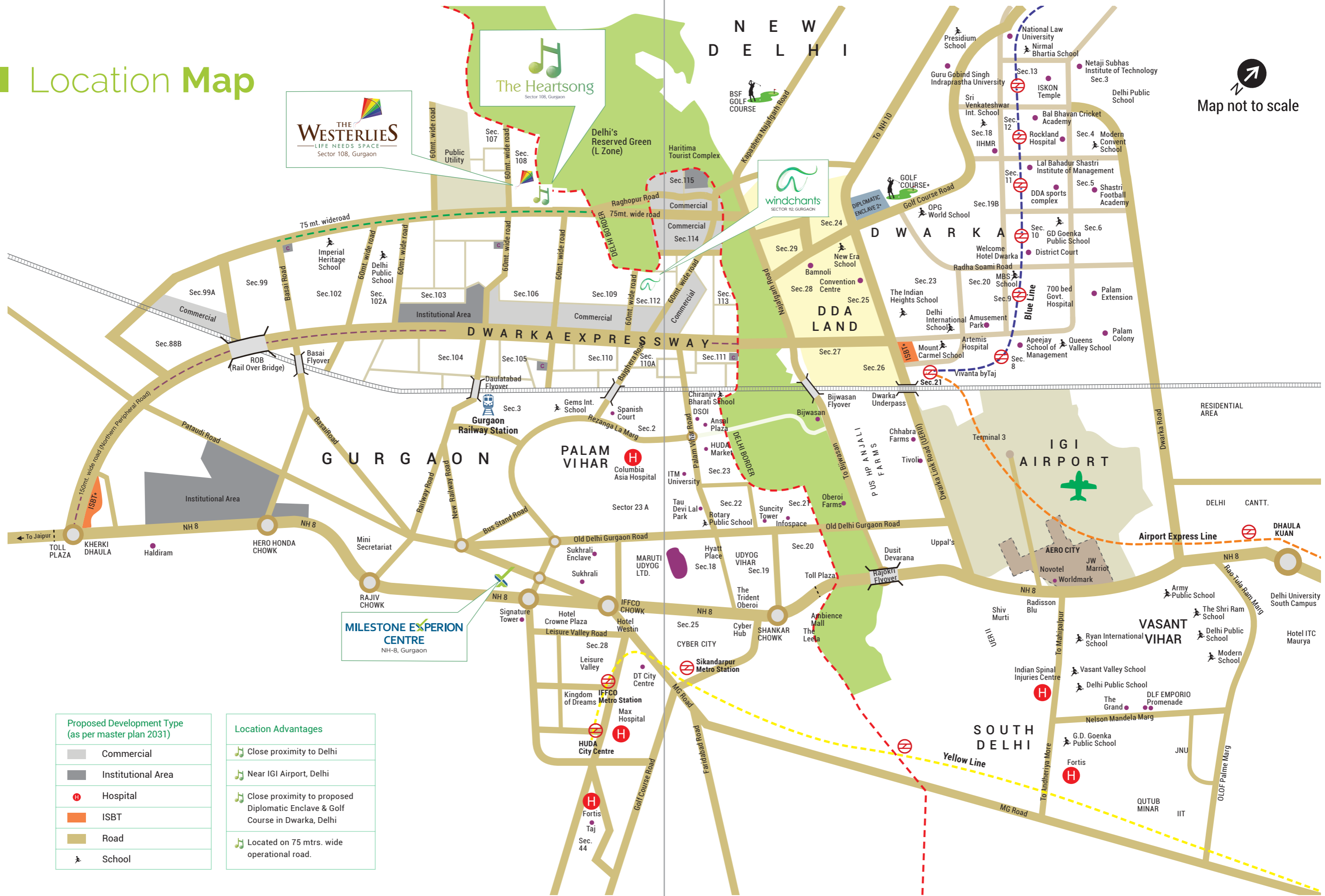


Spa & Sauna



Squash Court

Location Map



Proposed Development Type (as per master plan 2031)	
	Commercial
	Institutional Area
	Hospital
	ISBT
	Road
	School

Location Advantages	
	Close proximity to Delhi
	Near IGI Airport, Delhi
	Close proximity to proposed Diplomatic Enclave & Golf Course in Dwarka, Delhi
	Located on 75 mtrs. wide operational road.

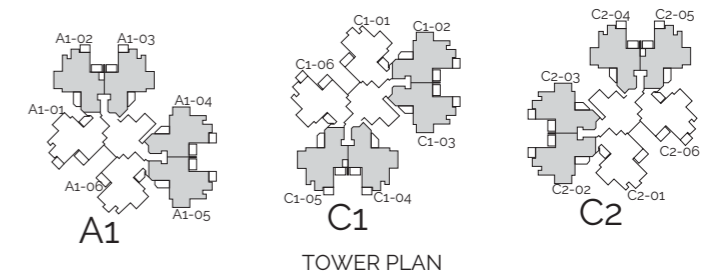
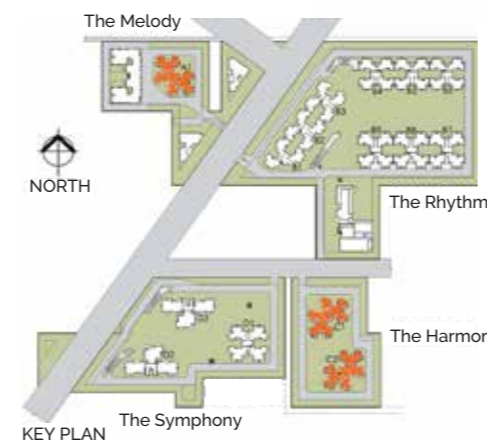
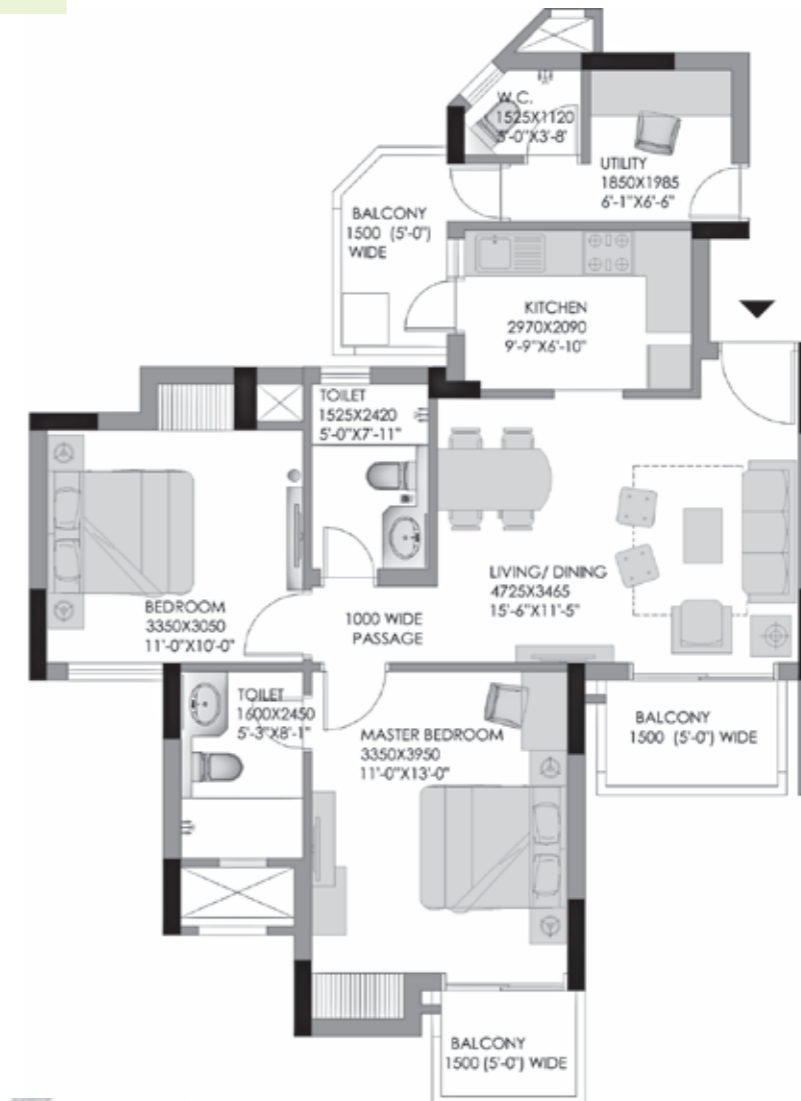
Master Plan



Floor Plan

2 BHK + 2 Toilet + Utility
 Unit Plan: Type 1A
 (Tower A1, C1 & C2)

Saleable Area:
 1283 (Sqft) | 119.19 (Sqm)

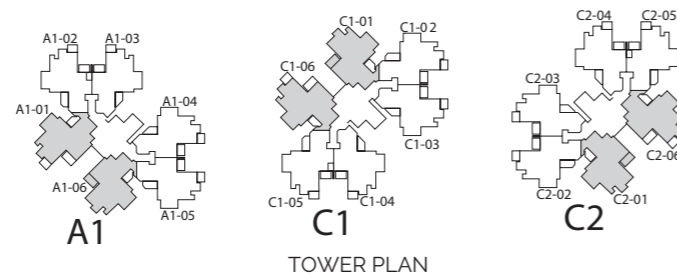
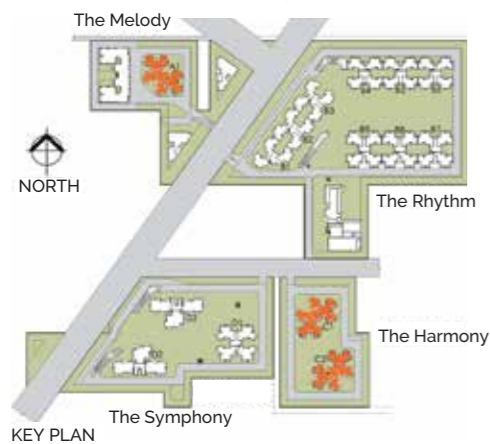
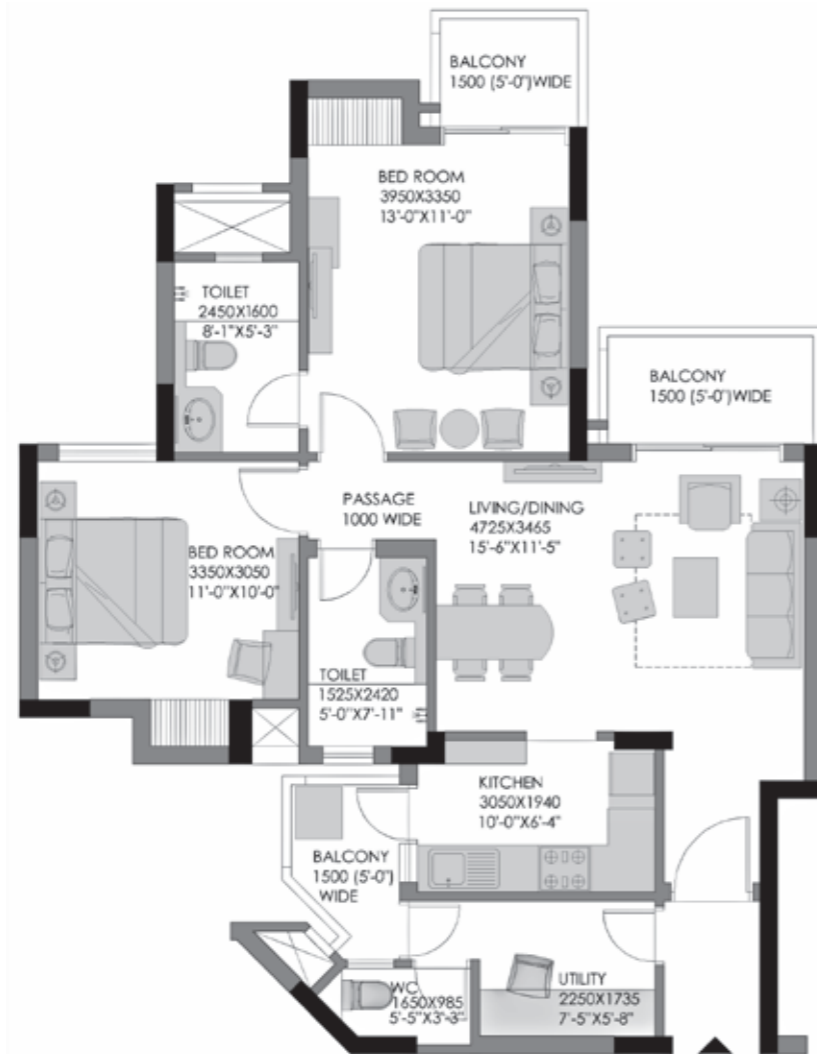


Carpet Area: 67.00 (Sqm) / 721.19 (Sqft) | Built-up Area Including Balcony Area: 970.59 (Sqft)

Floor Plan

2 BHK + 2 Toilet + Utility
Unit Plan: Type 1B
(Tower A1, C1 & C2)

Saleable Area:
1283 (Sqft) | 119.19 (Sqm)

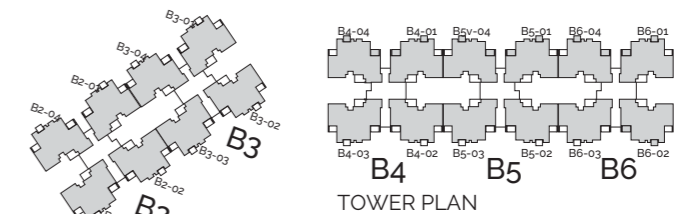
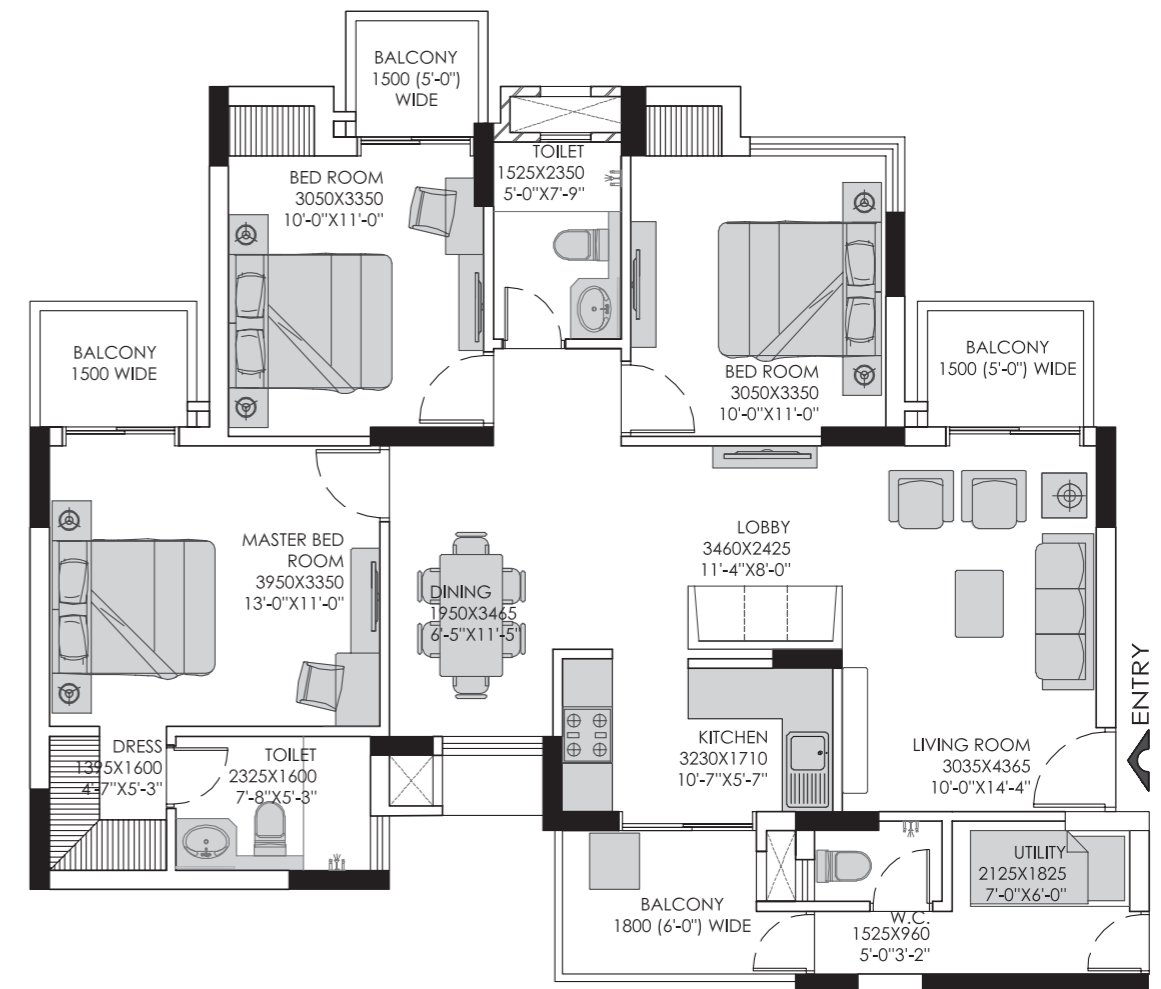


Carpet Area: 68.23 (Sqm) / 734.43 (Sqft) | Built-up Area Including Balcony Area: 978.23 (Sqft)

Floor Plan

3 BHK + 2 Toilet + Utility
Unit Plan: Type 2A
(Tower B2-B6)

Saleable Area:
1758 (Sqft) | 163.32 (Sqm)

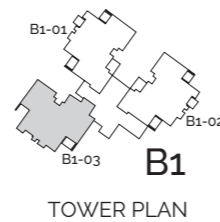
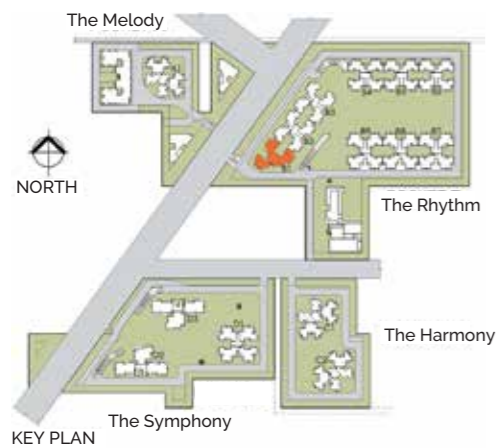
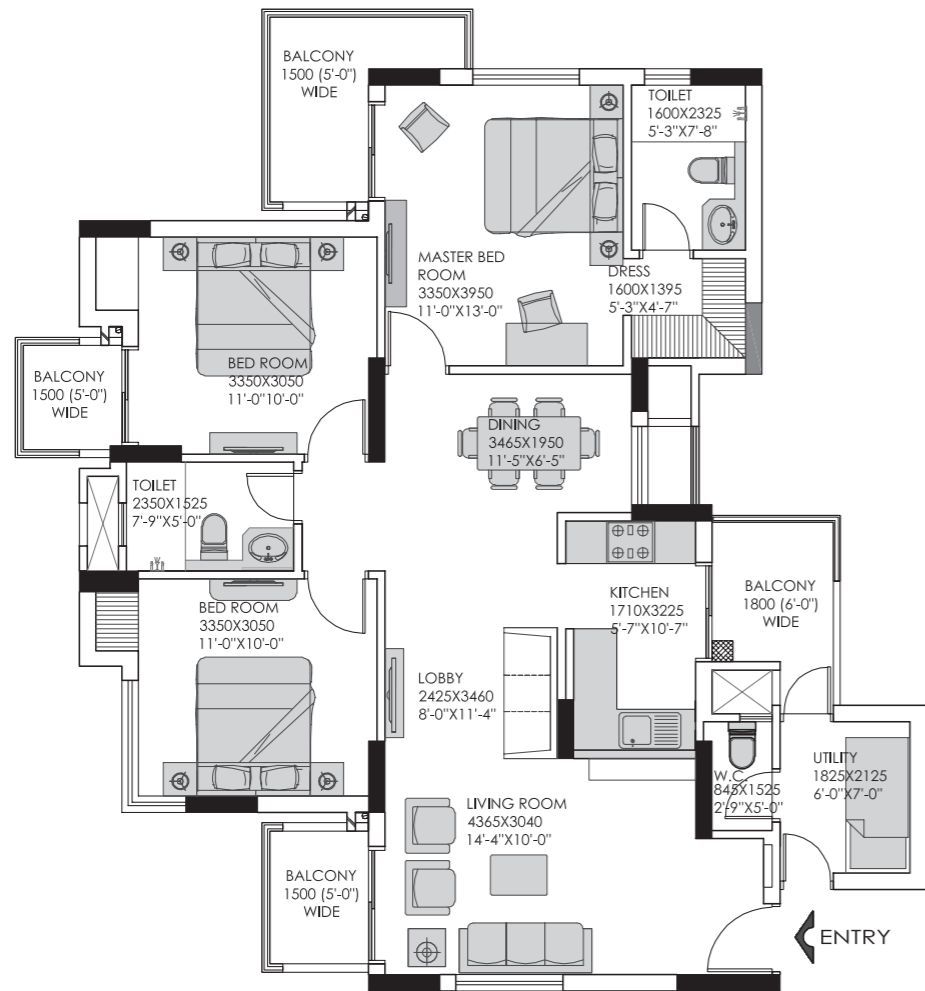


Carpet Area: 90.55 (Sqm) / 974.68 (Sqft) | Built-up Area Including Balcony Area: 1275.53 (Sqft)

Floor Plan

3 BHK + 2 Toilet + Utility
Unit Plan: Type 2B
(Tower B1)

Saleable Area:
1758 (Sqft) | 163.32 (Sqm)

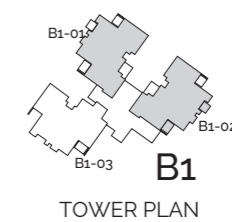
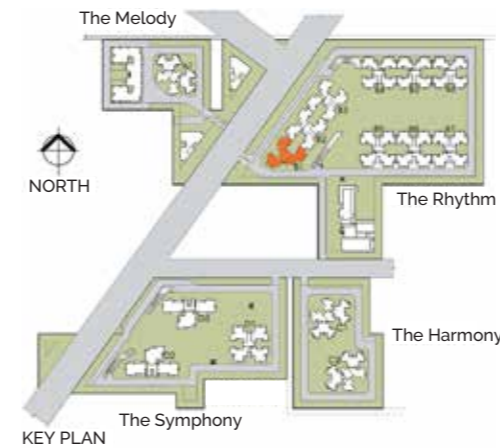
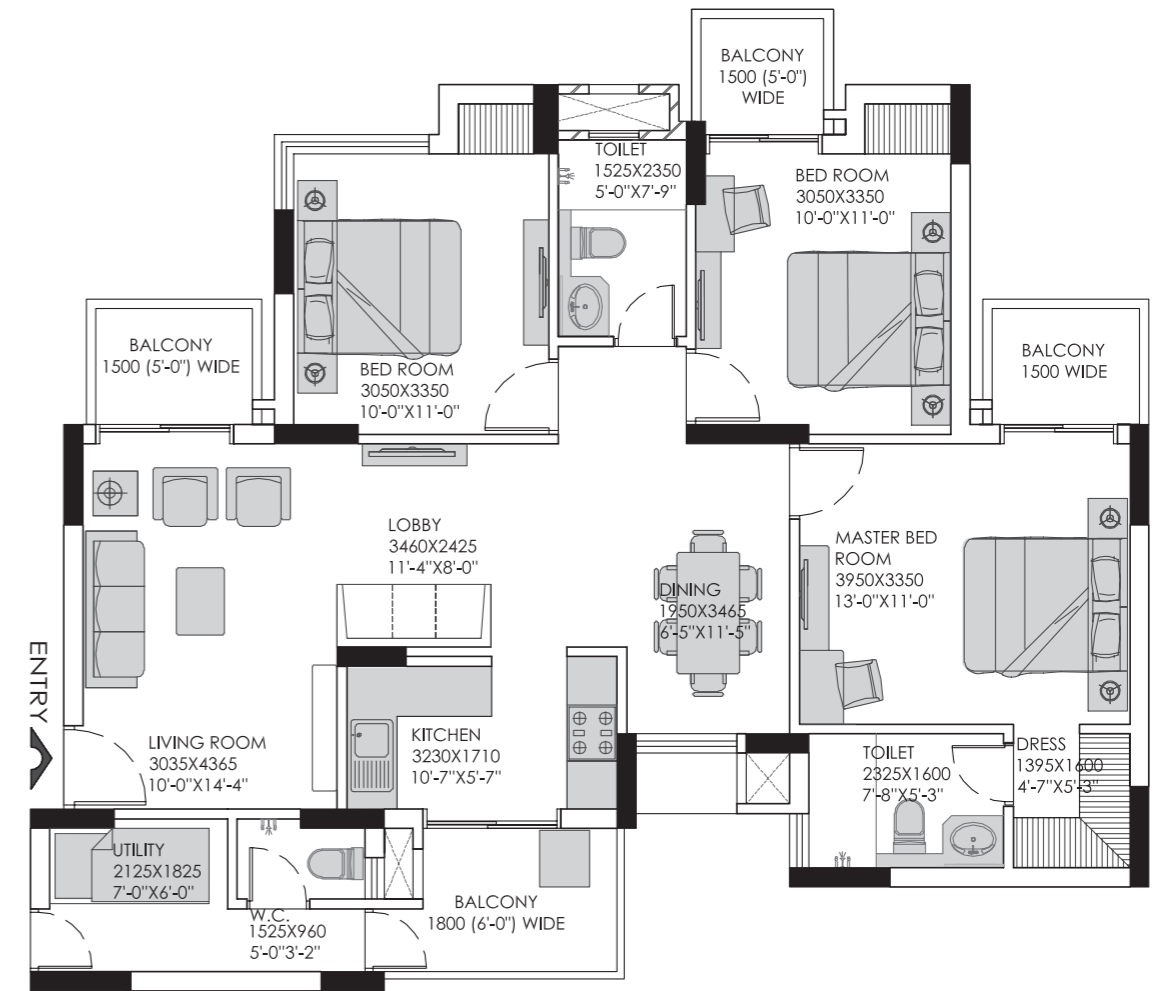


Carpet Area: 91.64 (Sqm) / 986.41 (Sqft) | Built-up Area Including Balcony Area: 1338.29 (Sqft)

Floor Plan

3 BHK + 2 Toilet + Utility
Unit Plan: Type 2C
(Tower B1)

Saleable Area:
1758 (Sqft) | 163.32 (Sqm)

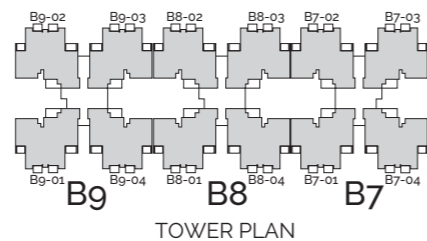
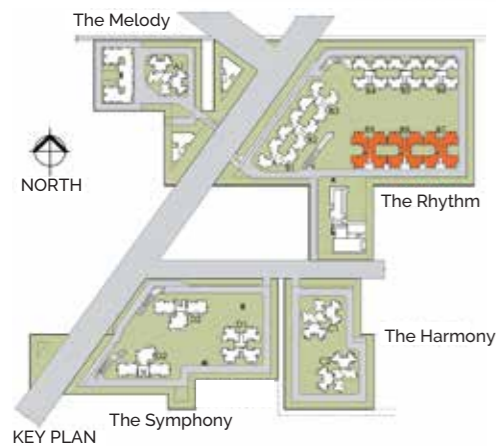
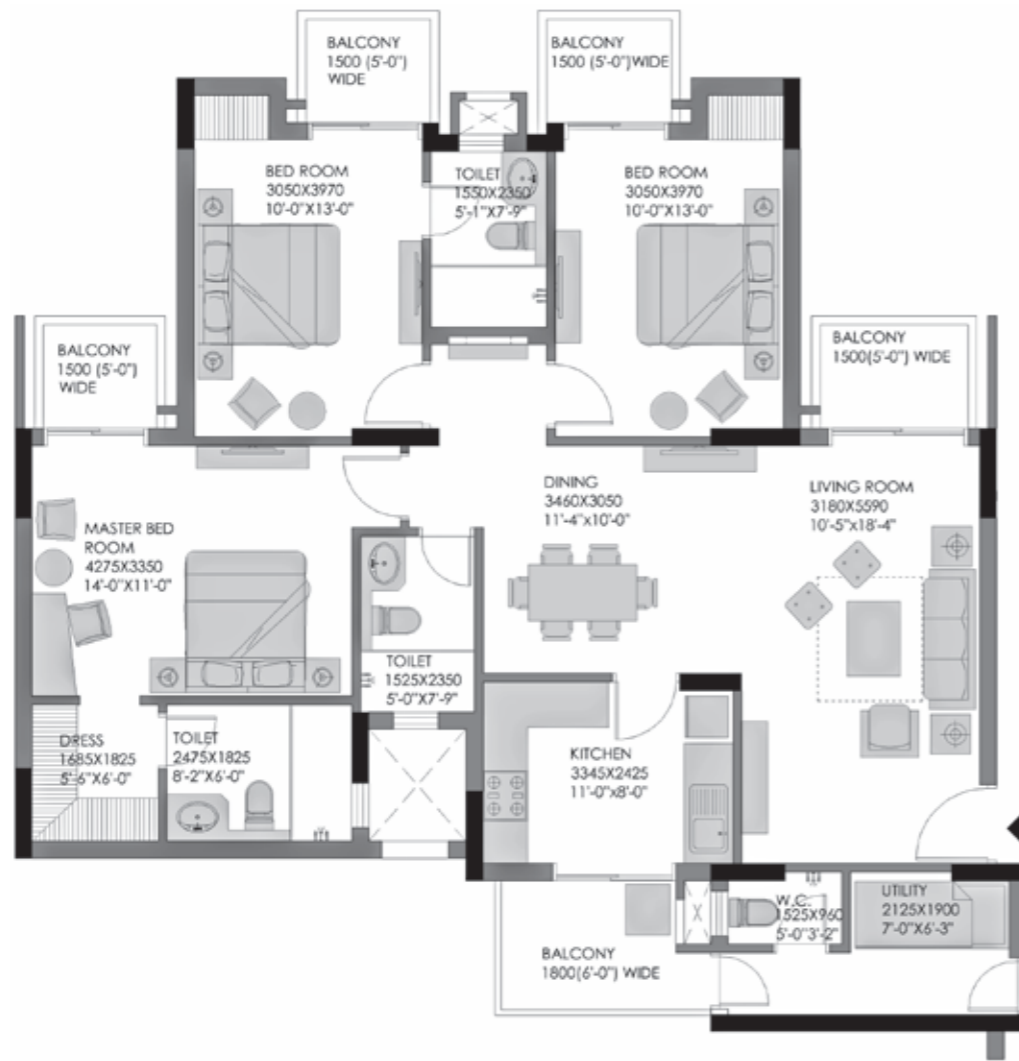


Carpet Area: 90.55 (Sqm) / 974.68 (Sqft) | Built-up Area Including Balcony Area: 1275.53 (Sqft)

Floor Plan

3 BHK + 3 Toilet + Utility
Unit Plan: Type 3
(Tower B7, B8 & B9)

Saleable Area:
2003 (Sqft) | 186.08 (Sqm)

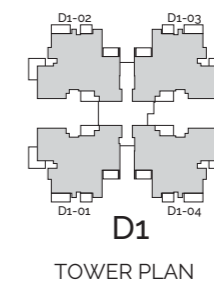
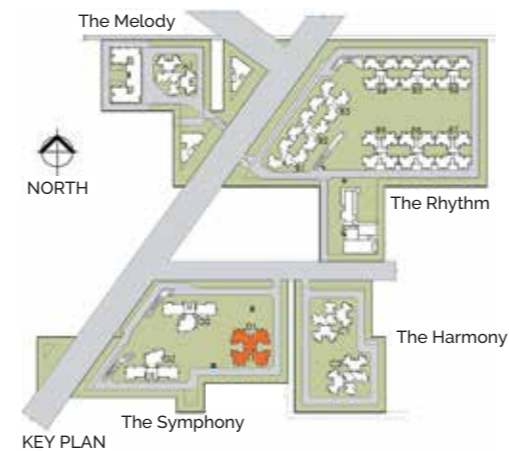
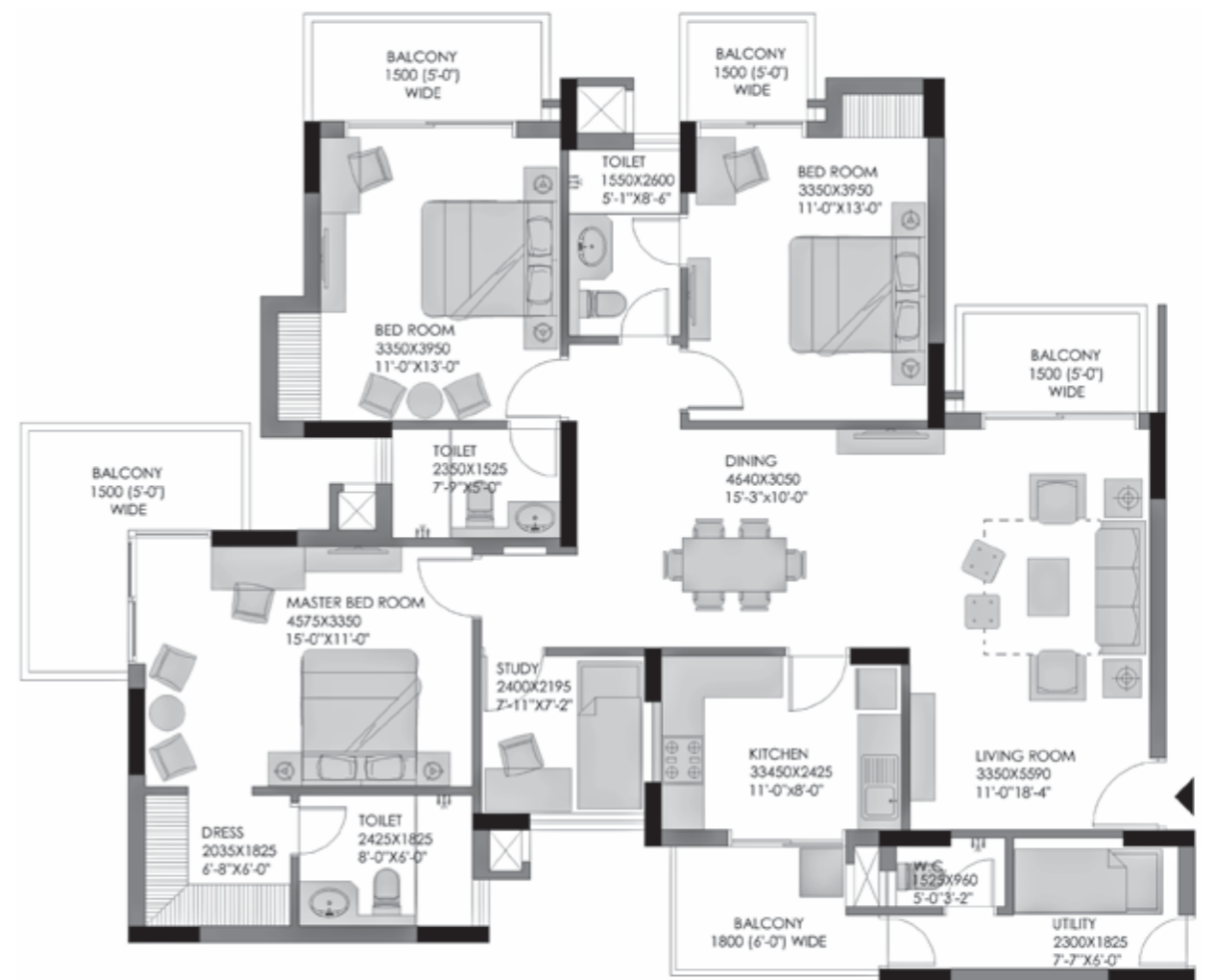


Carpet Area: 106.00 (Sqm) / 1140.98 (Sqft) | Built-up Area Including Balcony Area: 1500.29 (Sqft)

Floor Plan

3 BHK + 3 Toilet + Utility + Study
Unit Plan: Type 4 (Tower D1)

Saleable Area:
2338 (Sqft) | 217.21 (Sqm)

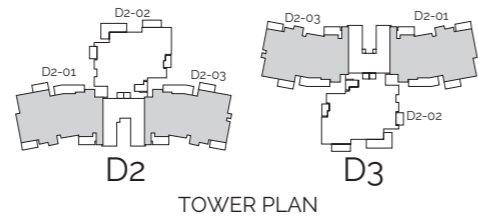
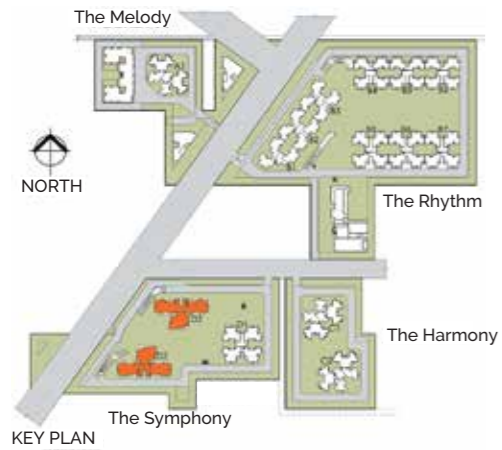
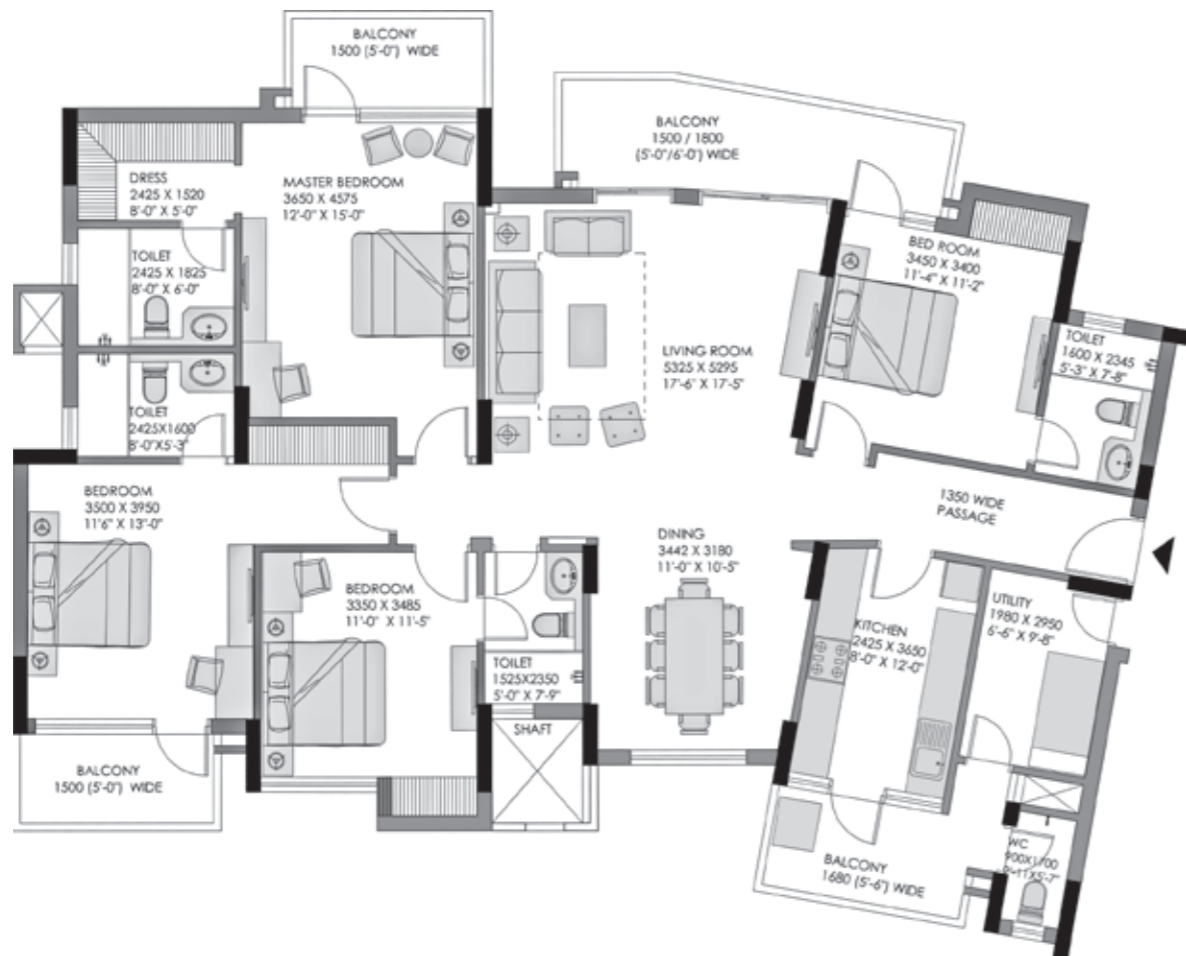


Carpet Area: 120.96 (Sqm) / 1302.01 (Sqft) | Built-up Area Including Balcony Area: 1771.32 (Sqft)

Floor Plan

4 BHK + 4 Toilet + Utility
Unit Plan: Type 5A
(Tower D2 & D3)

Saleable Area:
2631 (Sqft) | 244.43 (Sqm)

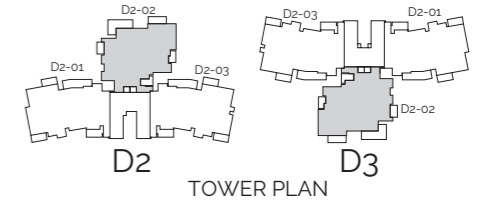
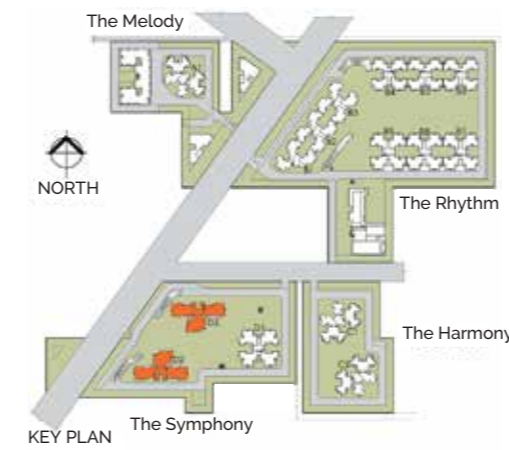
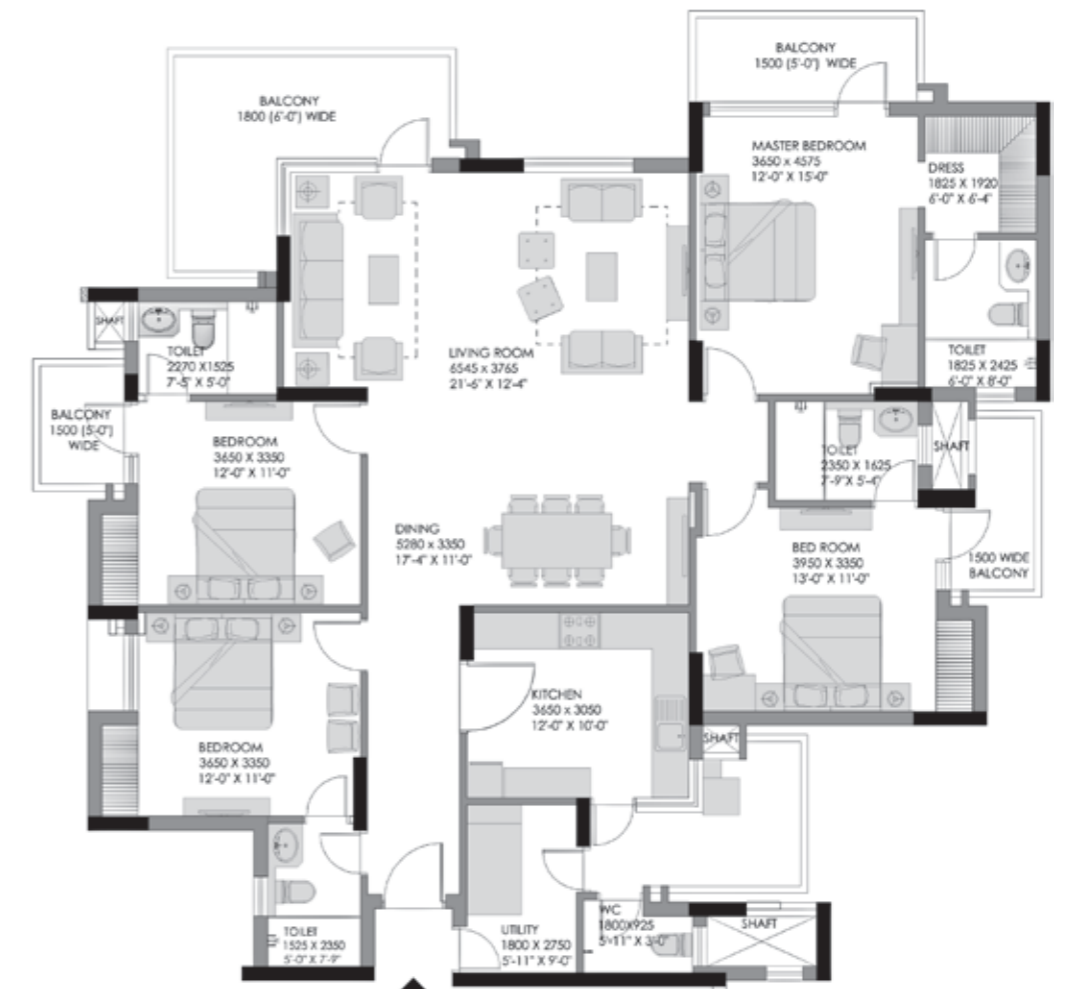


Carpet Area: 148.53 (Sqm) / 1598.78 (Sqft) | Built-up Area Including Balcony Area: 2088.22 (Sqft)

Floor Plan

4 BHK + 4 Toilet + Utility
Unit Plan: Type 5B
(Tower D2 & D3)

Saleable Area:
2779 (Sqft) | 258.18 (Sqm)

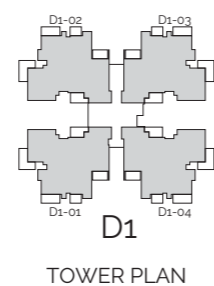
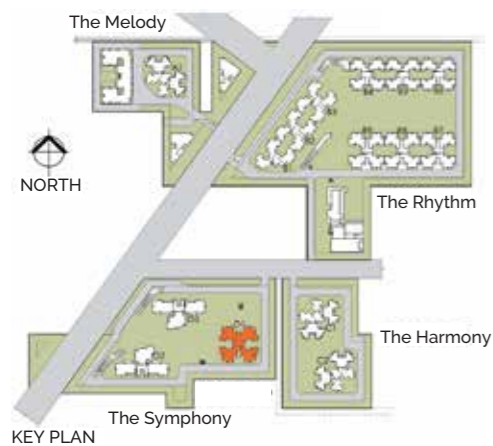
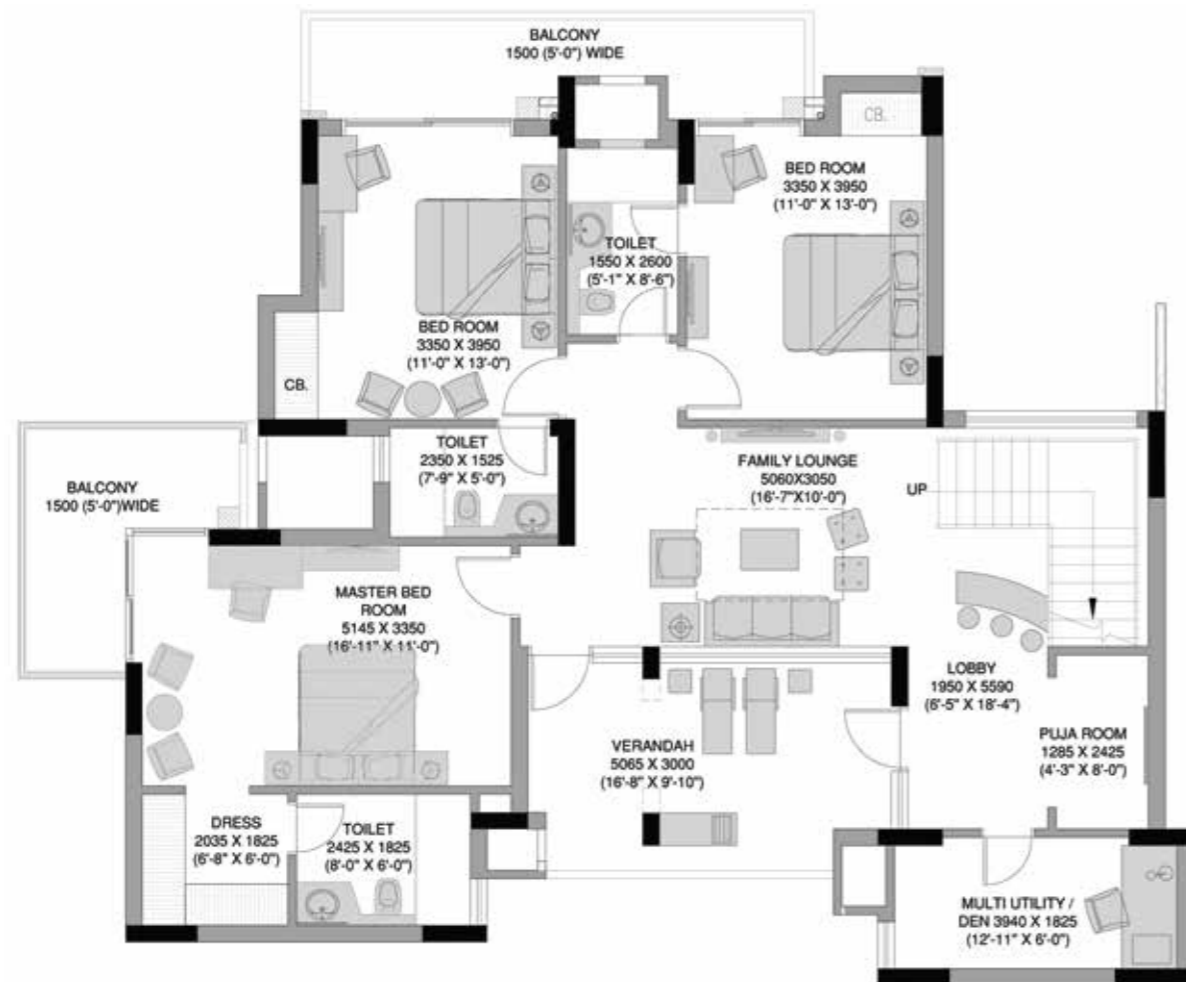


Carpet Area: 151.53 (Sqm) / 1631.07 (Sqft) | Built-up Area Including Balcony Area: 2204.78 (Sqft)

Floor Plan

Penthouse Plan (Lower)
Type 6A (Tower D1)

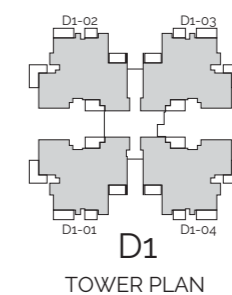
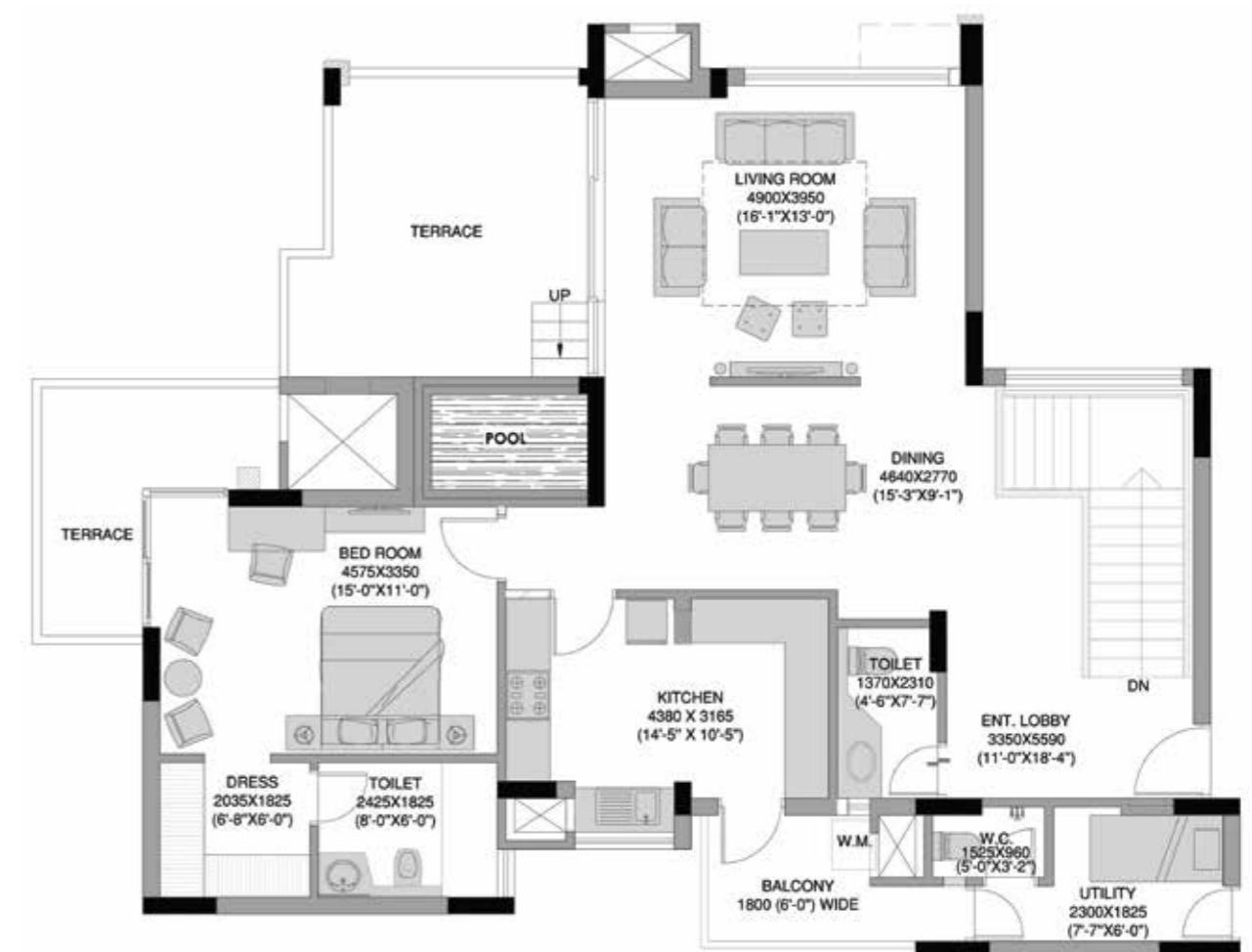
Saleable Area:
4184 (Sqft) | 388.70 (Sqm)



Carpet Area: 209.54 (Sqm) / 2255.49 (Sqft) | Built-up Area Including Balcony Area: 3245.56 (Sqft)

Floor Plan

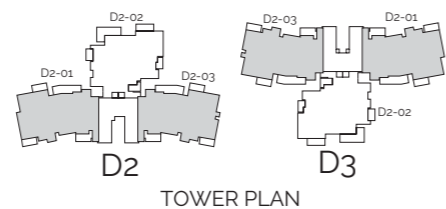
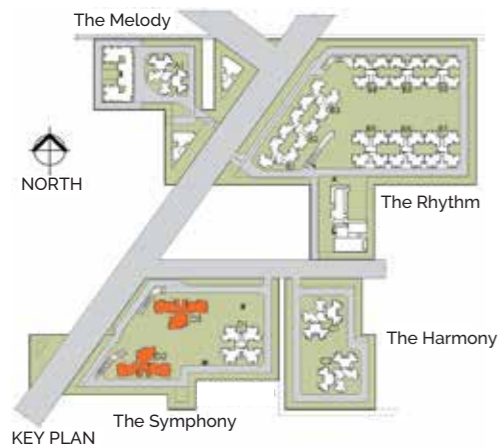
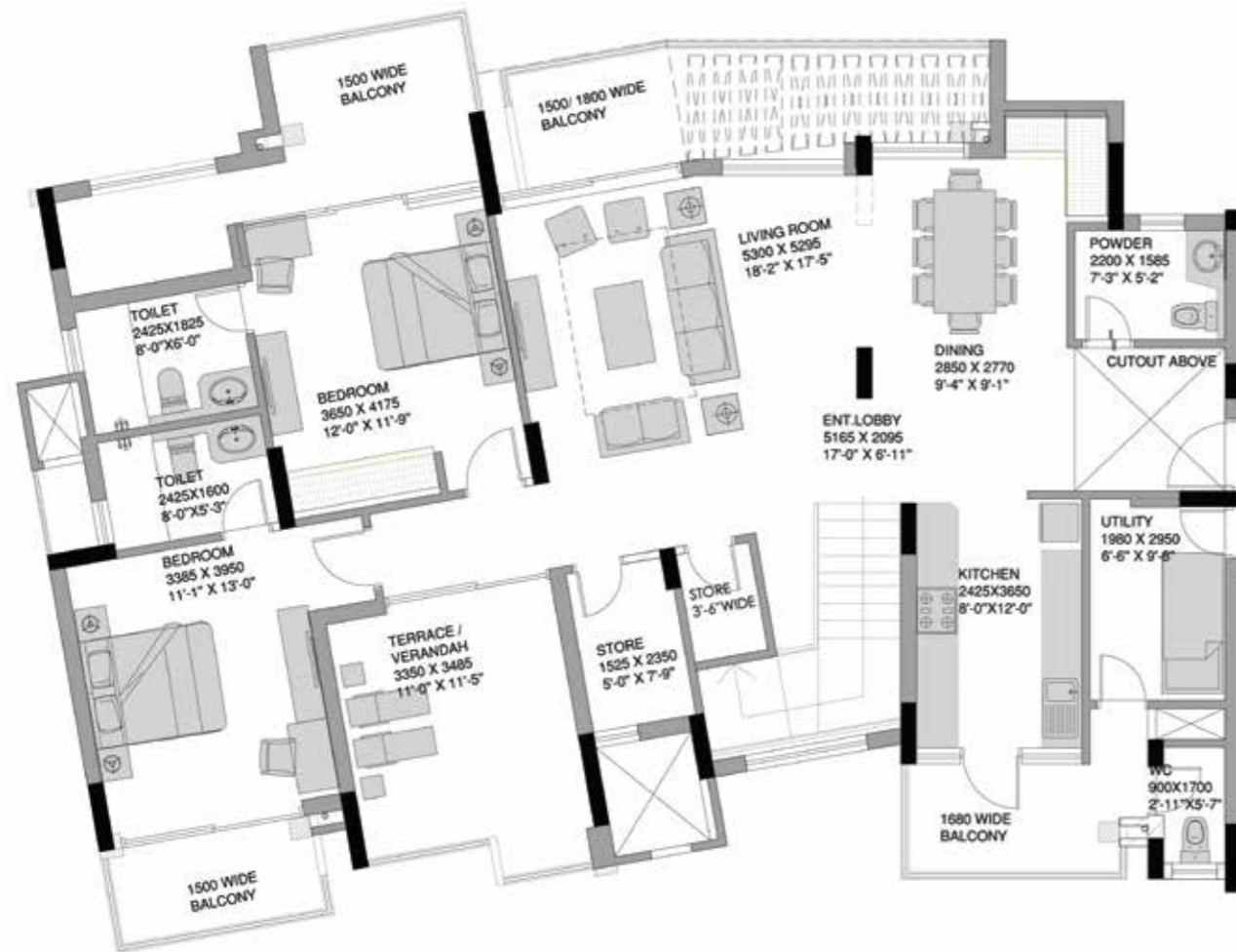
Penthouse Plan (Upper)
Type 6A (Tower D1)



Floor Plan

Penthouse Plan (Lower)
Type 6B (Tower D2 & D3)

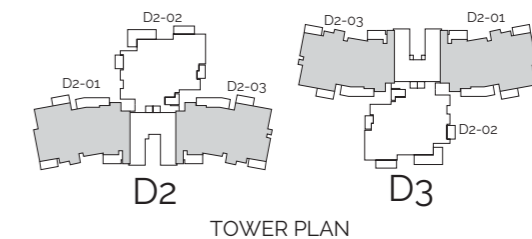
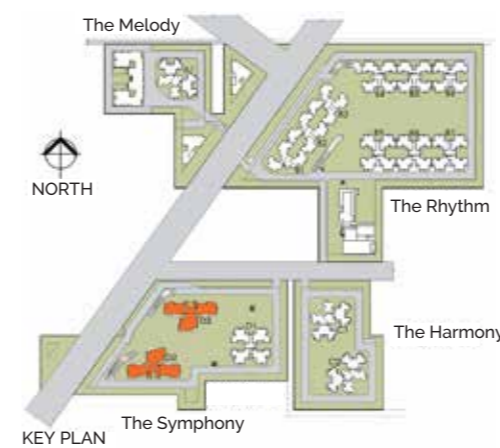
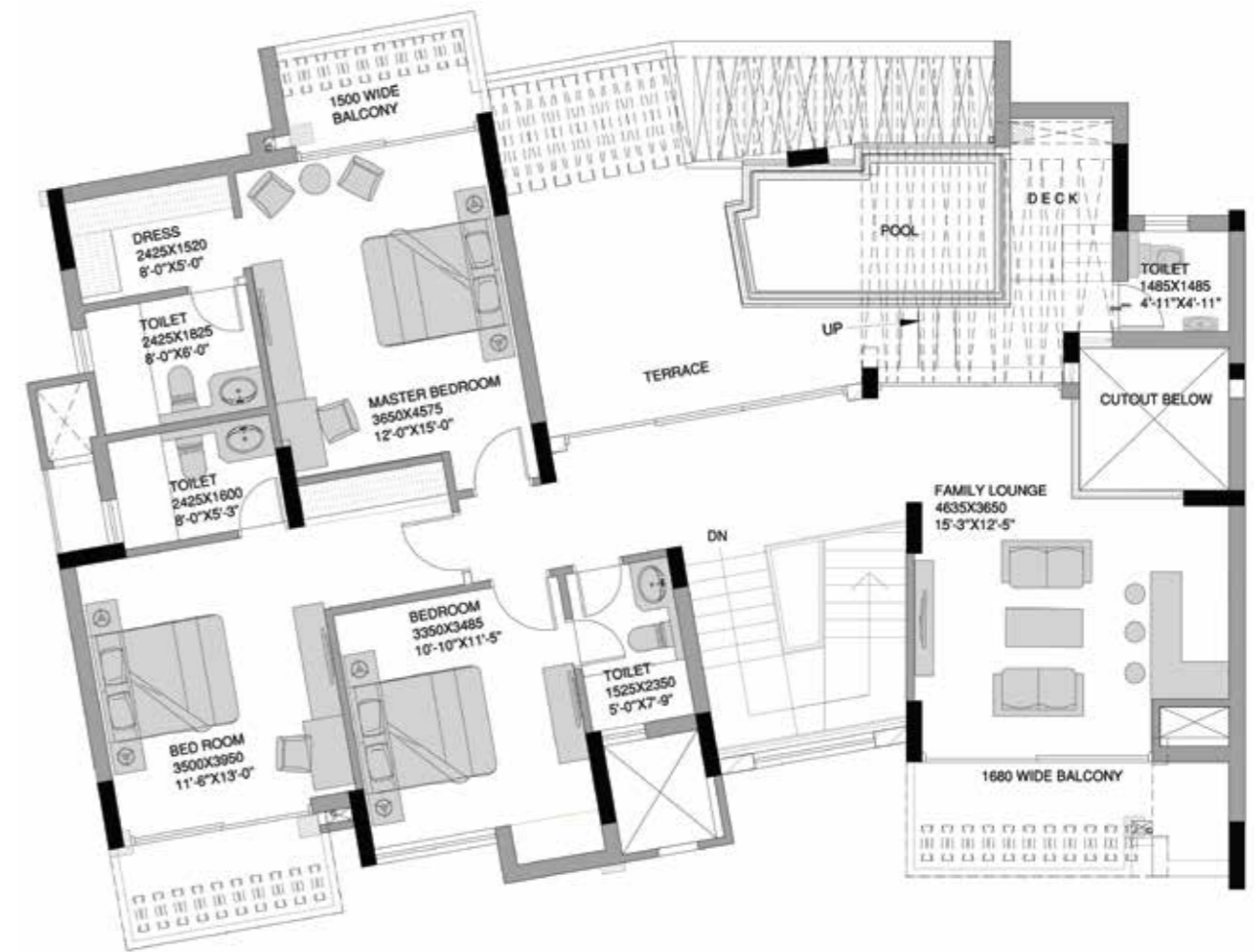
Saleable Area:
4747 (Sqft) | 441.01 (Sqm)



Carpet Area: 250.72 (Sqm) / 2698.75 (Sqft) | Built-up Area Including Balcony Area: 3773.86 (Sqft)

Floor Plan

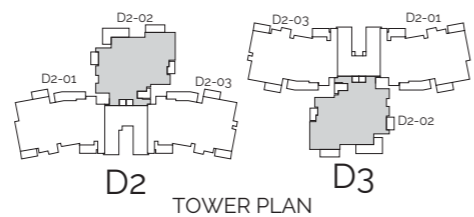
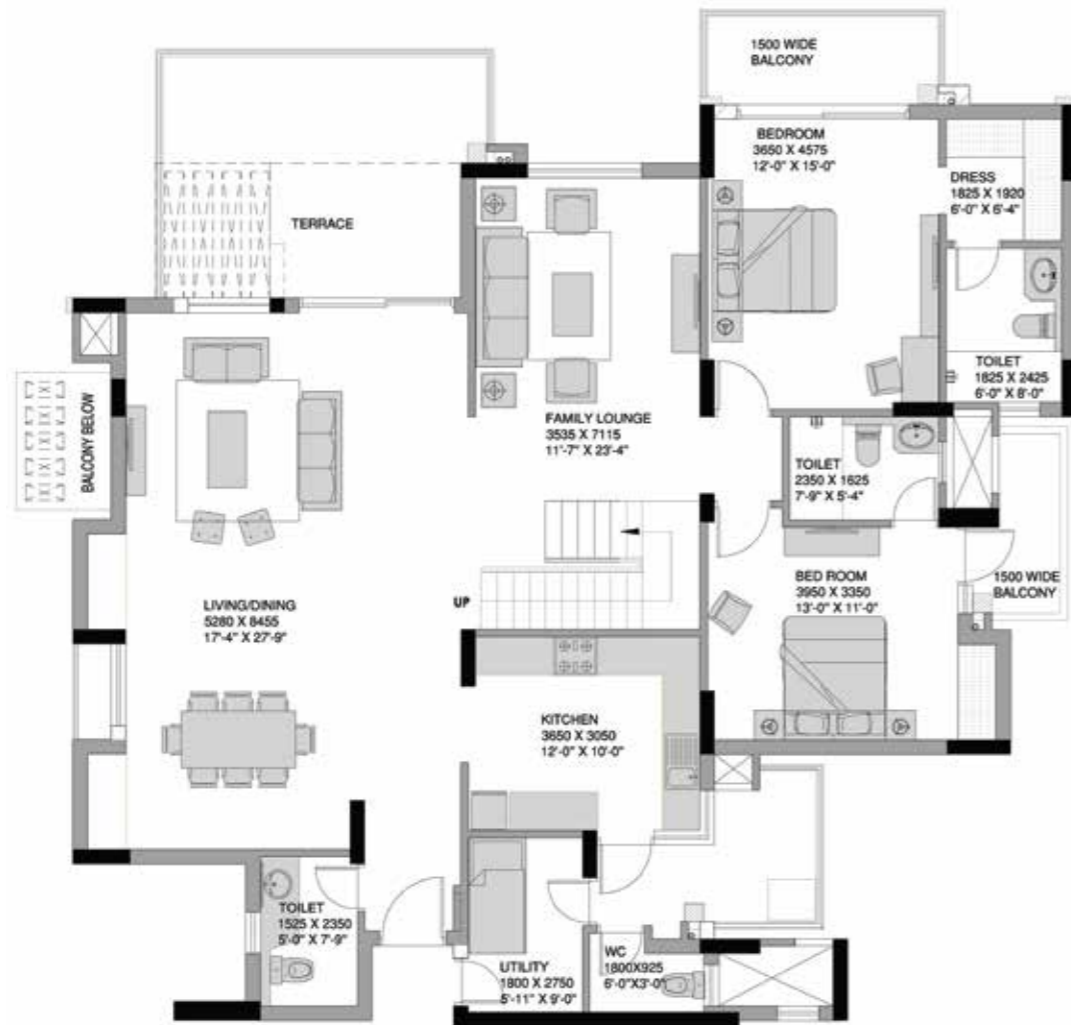
Penthouse Plan (Upper)
Type 6B (Tower D2 & D3)



Carpet Area: 250.72 (Sqm) / 2698.75 (Sqft) | Built-up Area Including Balcony Area: 3773.86 (Sqft)

Floor Plan

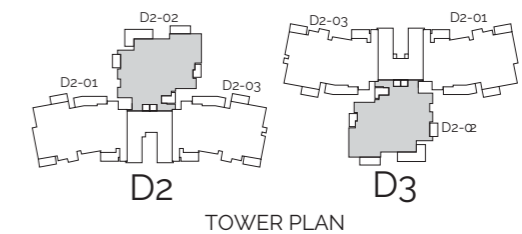
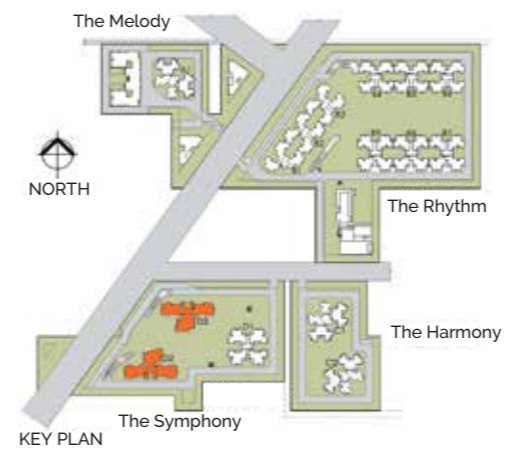
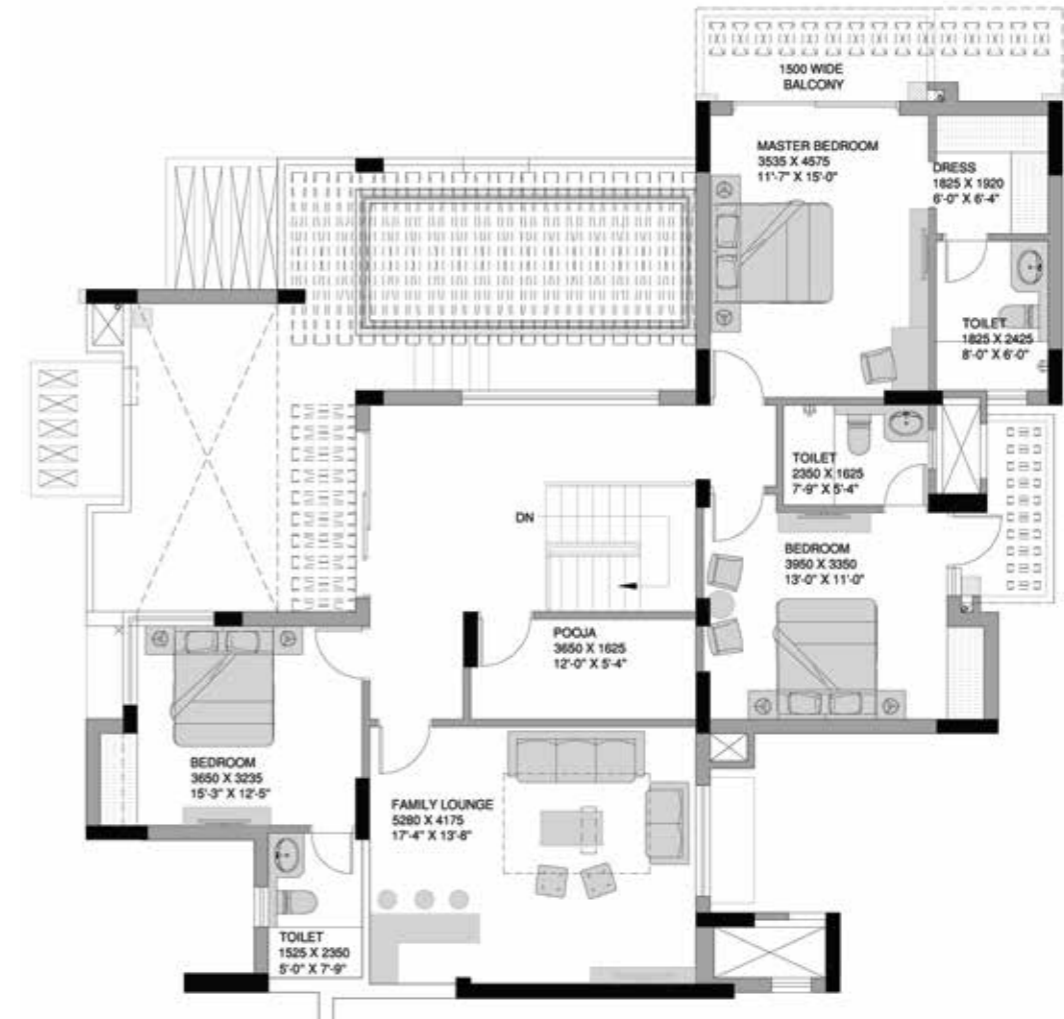
Penthouse Plan (Lower)
 Type 6C (Tower D2 & D3)
 Saleable Area:
 4801 (Sqft) | 446.02 (Sqm)



Carpet Area: 258.09 (Sqm) / 2778.08 (Sqft) | Built-up Area Including Balcony Area: 3815.73 (Sqft)

Floor Plan

Penthouse Plan (Upper)
 Type 6C (Tower D2 & D3)



Carpet Area: 258.09 (Sqm) / 2778.08 (Sqft) | Built-up Area Including Balcony Area: 3815.73 (Sqft)

About Experion

Experion is a 100% FDI funded real estate developer backed by Experion Holdings Pte. Ltd., Singapore, the real estate investing arm of the \$2.5 billion AT Holdings group of companies. Other businesses of AT Holdings include Construction, Oil & Gas, Renewable Energy and Asset Management. AT Capital has recently established its real estate footprint in The Netherlands, Europe.

At Experion, we believe that good experiences foster enduring relationships. We offer transparency in transaction, thought-leadership in action, customer insight in our developments, thereby turning every relationship into unique, positive, engaging and memorable experiences.

Our Awards



Our Projects



Air-conditioned Apartments, Penthouses & Villas

Spread over 23 acres in sector 112, Gurugram, Windchants offers luxury villas, penthouses, duplexes and apartments along with 2,50,000 sq. ft. activity spaces and an endless view of artistically laid out landscape. Offer of possession commenced for the project, which has one of Asia's largest residential skywalk.



100 Acres Township Project

The Westerlies in sector 108 Gurugram, offers developed plots and villas with amenities that match international standards.



Premium Air-Conditioned Apartments

Experion Capital offers air-conditioned apartments in an enviable location, next to Indira Gandhi Pratishthan at Vibhuti Khand, Gomti nagar, Lucknow. Multiple offices & retail complexes in the vicinity makes it a convenient place to reside at, giving you a magnificent residential experience in the capital of U.P.



World-class Office Cum Retail Development

It's location is as prime as it can get on NH-8. The 11 floor, USGBC Platinum LEED Grade A and GRIHA Rated 4 certified development comes with spacious & well appointed lobbies, defining an address that's a milestone in itself.



Disclaimer: Actual site images have been set in the background created by CGI renderings to highlight the architectural design.



Corporate office: 2nd Floor, Plot No. 18, Institutional Area, Sector-32, Gurugram-122001, Haryana

Phone: +91 124 628 1630 | Fax: +91 124 628 1681

SMS THS to 56767 | www.theheartsong.in | www.experion.co | contact@experion.net.in

Disclaimer: This is for information purposes only and does not constitute any offer or contract. Actual site images have been set in the background created by CGI rendering to highlight the architectural design. Concepts alluded herein are subjective. Carpet Area for our projects as per RERA, 2016. Air-conditioning (Split AC) offered only in bedrooms & living room. One Ambulance available for Experion Residents. Experion Developers Pvt. Ltd. (Experion).

License: No. 38 of 2010 dated 14.05.2010 for 15,025 acres granted by DGTCP, Haryana to Experion Realty Pvt. Ltd. and Experion Real Estate Developers Pvt. Ltd. for development of a group housing colony. Building plans approved memo no. ZP-753/JD(BS)/2012/18512 dt. 18.9.2012 for 811 nos. apartments, 144 nos. EWS UNITS, convenient shopping, 2 nos. nursery schools and community building. Occupation Certificate received for 811 units. RERA Registration for Pocket D (Phase 4) No. 306 of 2017 dated 17.10.2017 and 2 nos. Nursery Schools (Phase 5) Regd. No. 113 of 2017 dated 28.08.2017. In case of inspection of original approvals, the same can be inspected at corporate office with prior notice. Registered office of Experion Developers Pvt. Ltd. is at F9, First Floor, Manish Plaza 1, Plot No. 7, MLU, Sector 10, Dwarka, New Delhi-110075, India. CIN: U70109DL2006FTC151343.